

“Public Buildings in Stone”

(the Fire Alarm Headquarters building at Boston, Massachusetts)

Stone, Stone Publishing Company

Vol. XLVII, No. 4, April 1926, pp. 230

The article begins:

“No better example of forethought in the choice of materials for a public building can be cited than that for the new Fire Alarm Headquarters building at Boston, Massachusetts. Stone, of course, was used exclusively for this beautiful and monumental structure...designed by O’Connell & Shaw...The Indiana Limestone and of variegated grade was furnished, cut and set by the Shea & Donnelly Company, quarrymen and cut stone contractors.”

This article, which begins on the next page,
is presented on the Stone Quarries and Beyond web site.

<http://quarriesandbeyond.org/>

Peggy B. Perazzo
Email: pbperazzo@comcast.net
July 2016

d'Or. In the entrance Hall the Dado, which is four feet high is of Black and Gold Marble, as is also the trim around the door. The Walls are of the Granite d'Or Marble and for the floor the same French Campan marbles as were used in the Hall of Honor rug design, may be seen in conventional patterns. The Elevator Halls at either end of the Long Room are finished in Tavernelle Claire. Finished throughout in this magnificent manner in marbles and fine woods, Montreal City Hall, while presenting to the visitor its same walls that withstood a fire, appears entirely new and reburnished in its interior decorations and arrangements. The re-designing of the old structure is the combined work of several architects, among them being Messrs. L. J. Lafreniere, J. O. Marchand, D. Viatt, A. Venne, E. Cormier, L. A. Amos and J. D. Spence.

BACK in the territorial days of Kansas a court house was built at Wyandotte, now Kansas City, Kansas. It was a frame structure and served until 1882. The lumber for this building was brought from St. Louis. The second court house was erected in 1882 and was of bricks, which were hauled from Booneville, Mo. This brick structure is now being torn down to make way for a \$1,000,000 structure of Indiana Limestone, the first shipment of which is expected from Bedford, Indiana, late this month. Frame to brick to stone, the usual transition that has taken place in this country with the growth of communities and the desire to make public buildings monumental.

Public Buildings in Stone

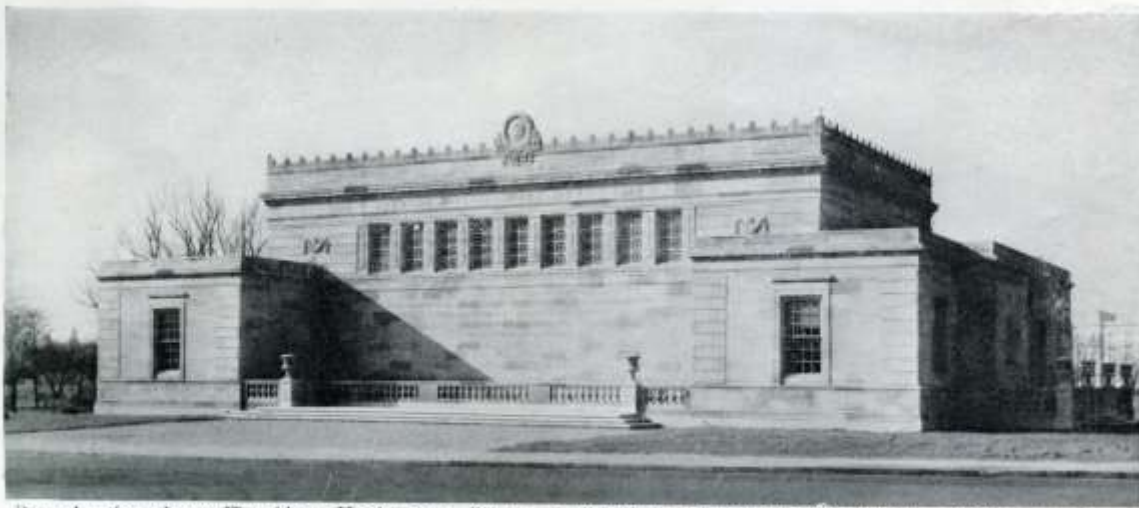
No better example of forethought in the choice of materials for a public building can be cited than that for the new Fire Alarm Headquarters building at Boston, Mass. Stone, of course, was used exclusively

for this beautiful and monumental structure, a general view and the doorway detail of which are herewith shown. In a park setting, such as this site in Boston stone alone blends with the surroundings. The Fire Alarm Headquarters building was designed by O'Connell & Shaw.



Main Entrance of new Fire Alarm Headquarters, Boston, showing the carved work, urns and decorative details in the same material as the walls. O'Connell & Shaw, architects.

nell & Shaw and is simple in outline and treatment, almost the extent of severity. The Indiana Limestone of the variegated grade was furnished, cut and set by the Shea & Donnelly Company, quarrymen and cut stone contractors.



Rear elevation of new Fire Alarm Headquarters, Boston, an all Indiana Limestone building. Architects: O'Connell & Shaw. Cut Stone Contractors: Shea & Donnelly Company.

(photo captions) "Main entrance of new Fire Alarm Headquarters, Boston, showing the carved work, urns and decorative details in the same material as the walls. O'Connell & Shaw, architects." & "Rear elevation of new Fire Alarm headquarters, Boston, an all Indiana limestone building. Architects: O'Connell & Shaw. Cut Stone Contractors: Shea & Donnelly Company."