

“Sculpture and Monument News of San Francisco”

In *The Monumental News*, Vol. XVIII, No. 4, April 1909, pp. 314

Presented on the Stone Quarries and Beyond web site
<http://quarriesandbeyond.org/>

Peggy B. Perazzo - Email: pbperazzo@comcast.net

April 2011

SCULPTURE and MONUMENT NEWS of SAN FRANCISCO

A number of important monumental and sculptural works have recently been completed in San Francisco.

rough California sandstone, 12 feet high and five feet in diameter, has been erected. Surmounting one of

Repairs from the earthquake damage to Sutro Heights in this park, have been completed. Many of the statues here were badly damaged. The Venus shown in the illustration is one of those that had to be treated to an extensive restoring process which the picture shows has been well done.

The second of a series of portrait sculptures embodying the early history of California has lately been completed by Sculptor Arthur Putnam, and the bronze cast was recently exhibited in the Studio building. It is a noble and impressive figure of the priest, Father Junipero Serra, whose name all California loves and honors. He stands with bent head and sandaled feet, his brown robe cast loosely about him, confined only by its knotted girdle; the nailed limbs of the Jesu pictured on the cross hanging at his side. The modeling of the tall, gaunt body calls for keen appreciation. Powerful in limb and in pose, the impenetrable countenance, half concealed, wears an expression of deep gentleness and solemnity. The man looks



JUNIPERO SERRA.
Arthur Putnam, Sc.



BURNS MONUMENT.
M. Earl Cummings, Sc.



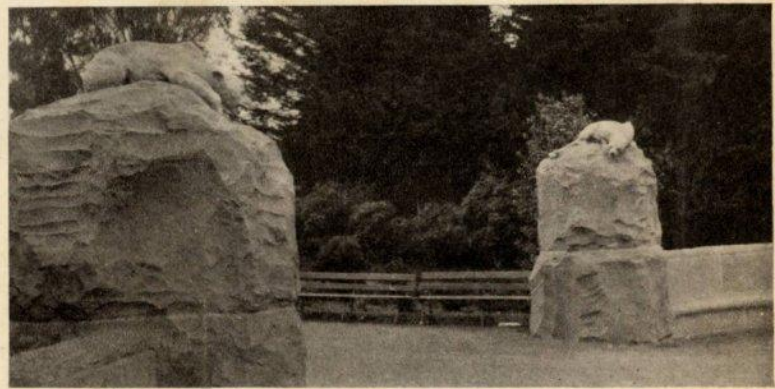
A Restored Venus.
Golden Gate Park.

A statue of Robert Burns stands just south of the North Boulevard in Golden Gate park. It was modeled by M. Earl Cummings, of San Francisco. The bronze figure stands nine feet high, on a California granite pedestal, 6½ feet high and 4½ feet square.

The total cost of the statue as it stands was \$5,000, which was contributed by the Scottish residents of San Francisco.

Sculptor Cummings began work on the model more than four years ago. At the time of the great disaster of April, 1906, the plaster model was just ready to go to the foundry, but the work was so badly damaged that the whole statue had to be practically re-modeled. The statue was formally dedicated and unveiled with very appropriate ceremonies in which many of the leading Scotchmen of San Francisco took part. The casting was done at L. De Rome's Bronze, Brass & Bell Foundry, of San Francisco. On the front side of the pedestal is cut a garland and the simple name "Burns."

A handsome and substantial improvement has been completed at one of the main northern entrances to Golden Gate park. On each side of the broad driveway a huge pillar of



ENTRANCE TO GOLDEN GATE PARK, SAN FRANCISCO.
M. Earl Cummings, Sc.

them is a California lion, crouching, in the act of making a leap; the one on the left supports a bear, posing in an angry, fighting attitude. These figures are life size. Extending outward from the base of each pillar, in a circular form, is a broad stone bench 18 feet long.

The stone came from the McGilvray quarry in Madera county, and the animal figures were modeled by M. Earl Cummings, the young San Francisco sculptor, who is also a park commissioner. The bronze was cast at the DeRome foundry. The total cost was about \$2,000.

through the priest, despite the attitude of contemplative humility, and the modeling of the head, the dignity, strength and repression which stamp the features have been accorded much praise. The figure itself is eight feet high. It will be mounted on a pedestal of brick taken from the old Mission in San Diego, Cal. The pedestal will be about 7 ft. high and 10 ft. square. The statue will stand on the site of the first mission built near San Diego. The ground was purchased by residents of San Diego and the statue which cost \$5,000, donated by Mr. E. W. Scripps.