

“New Entrance Structures, Masonic Cemetery, San Francisco”

In *The Monumental News*, Vol. XVII, No. 4, April 1905, pp. 278

Presented on the Stone Quarries and Beyond web site
<http://quarriesandbeyond.org/>

Peggy B. Perazzo - Email: pbperazzo@comcast.net

April 2011

New Entrance Structures, Masonic Cemetery, San Francisco.

The imposing entrance to the Masonic Cemetery in San Mateo County, Cal., a short distance from San Francisco, was recently completed at a cost of about \$50,000. The Wilson-Lyon Construction Company, of San Francisco, were the contractors, and T. Paterson Ross, architect, of San Francisco, has had personal supervision of the construction.

The structure is of California granite, from the quarry of the Wilson-Lyon Co., near Raymond, Madera County, 165 miles from San Francisco. The setting of the granite work occupied over two months, and was very successfully performed.

The entire building is constructed of this white granite, with Spanish tile roof, with considerable ornamentation. The total height of the tower is 55 feet and the arch 18 feet. The full width of the building is 120 feet.

The chapel (shown at the left in the photograph) has an open timber roof with oak finish, with marble columns at the chancel.

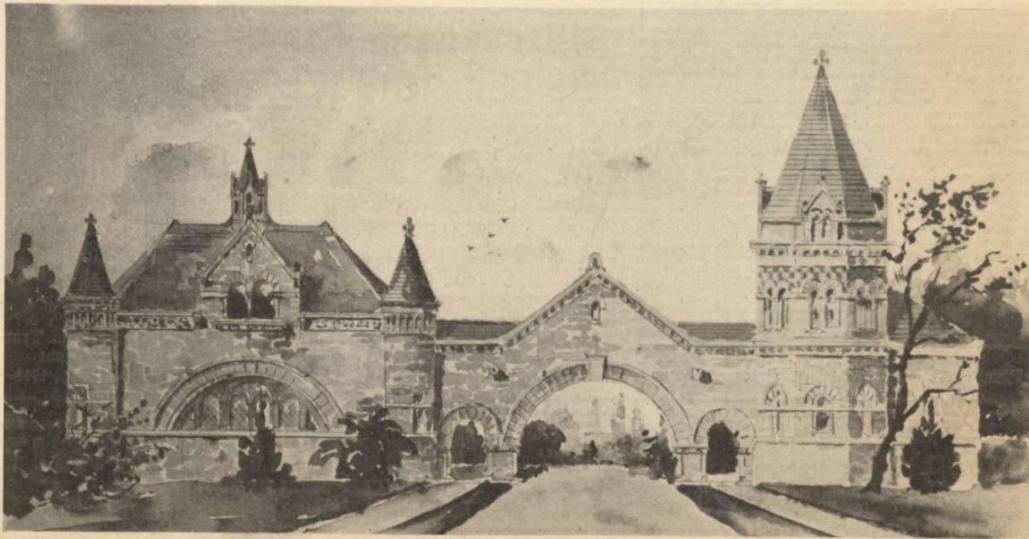
At the end of the chapel, behind the chancel, is the receiving vault, connecting underground, with 100 or more catacombs, all marble lined, and closed by doors with heavy bronze hinges, and art glass effects.

The office building (at the right of the photograph) contains offices and waiting-rooms, mortuary conveniences, superintendent's offices, etc.

The structure is massive and imposing throughout, and one of the finest buildings of the kind on the Pacific coast.

The cemetery is under the management of the Masonic Cemetery Association of San Francisco, and is one of the most attractive of the suburban burial grounds in the neighborhood of that city. It occupies a fine site outside of the city limits, and the new entrance structures form a fitting addition to its other substantial improvements. It is conveniently situated for interments from the city, and can be reached from the heart of San Francisco in a half-hour's ride on the electric cars.

CALIFORNIAN.



GROUP OF ENTRANCE BUILDINGS, MASONIC CEMETERY, SAN FRANCISCO.